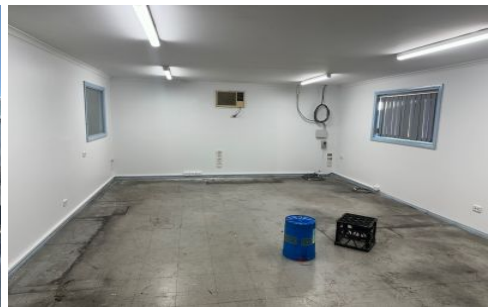




Marketings are Indicative



34/2115 - 213 Castlereagh Road Penrith NSW

PRD Commercial Western Sydney were appointed Exclusive Marketing Agents to offer Building 34/2115 - 2131 Castlereagh Road Penrith. for lease.

We are delighted to announce this premier space has been leased to a blue chip tenant for an initial 5 year term.

Located in the Manufacturer Precinct which is a state-of-the-art work environment designed to increase productivity, facilitate further growth and streamline business operations.

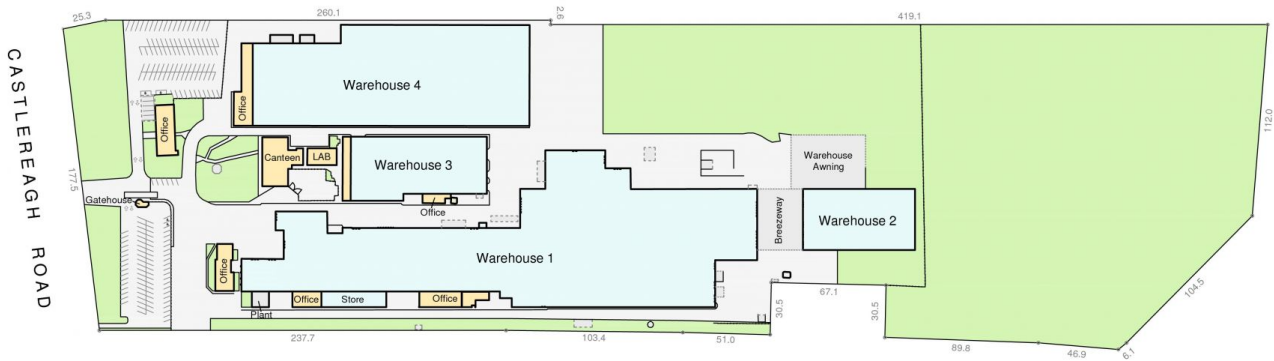
Landmark estate with on site facilities including a variety of quality food and drink options.

Type : Industrial
Building Size : 1609 sqm
View : <http://www.prdcommercialwest.com.au/lease/nsw/western-sydney/penrith/commercial/industrial/6326835>



Robert Tappouras
02 4732 3711

[For full version visit the website](http://www.prdcommercialwest.com.au)



Information Schedule

Title Details Lot 2 - DP787827
 Land Area 12.06 Ha
 Total Car Parking 172



Disclaimer: This plan has been prepared for marketing purposes only. Interested parties should undertake their own enquiries as to the accuracy of the information. Areas are approximate and dimension rounding may result in area discrepancies.

All land information taken from the Deposited Plan. Boundaries have not been defined.

Plan Prepared For:



SITE PLAN
 2115 - 2131 CASTLEREAGH ROAD
 PENRITH, NSW

Date:	02/08/2016
Ref:	60372
Rev:	-
Drawn:	NB
Checked:	CL
Scale:	1:2000 @ A3
Sheet:	1 of 1

sydney canberra melbourne brisbane adelaide perth
REALSERVE
 Real Estate Plans & Surveys
 P 02 9629 9377
 F 02 9475 5050
www.realserve.com.au