



28 Peachtree Road Penrith NSW

PRD Commercial Western Sydney were appointed exclusive marketing agents to offer 28 Peachtree Road, Penrith.

We are delighted to announce the building has been securely leased on a long term basis.

Demand is strong for freehold industrial buildings with external hardstand yard area.

Office - 210m²
Warehouse - 1215m²
Total - 1,425m² (approx.)

Land Area - 2,388m² (approx.)

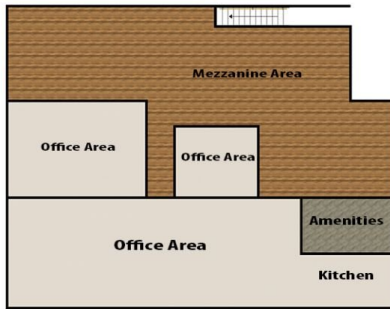
Building Size : 1425 sqm
Land Size : 2388 sqm
View : <http://www.prdcommercialwest.com.au/lease/nsw/western-sydney/penrith/commercial/industrial/6382534>



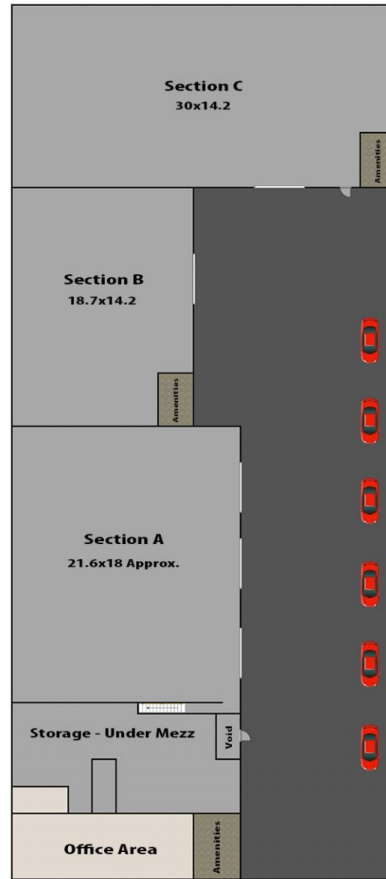
Darren Latty
02 4732 3711



Robert Tappouras
02 4732 3711



Upper Level (Section A)



Entry Level

28 Peachtree Road Penrith

This site plan is a basic outline of the property and is for illustration purposes only. This is not a true replica. All measurements are approximate and not guaranteed to be exact or to scale. Internal walls, doorways, windows and other icons have been purposely omitted for viewing simplicity. Interested parties should inspect the property in person.

