



**528 Great Western Highway St Marys NSW**

Invest or Occupy - Main Road Exposure

1499sqm site with approx. 720sqm of buildings  
Designed as 3 units with 2 tenancies on month to month leases

E3 Productivity Support Zoning  
PRD Commercial Western Sydney have been appointed exclusive marketing agents to offer for sale by Auction, 528 Great Western Highway St Marys.

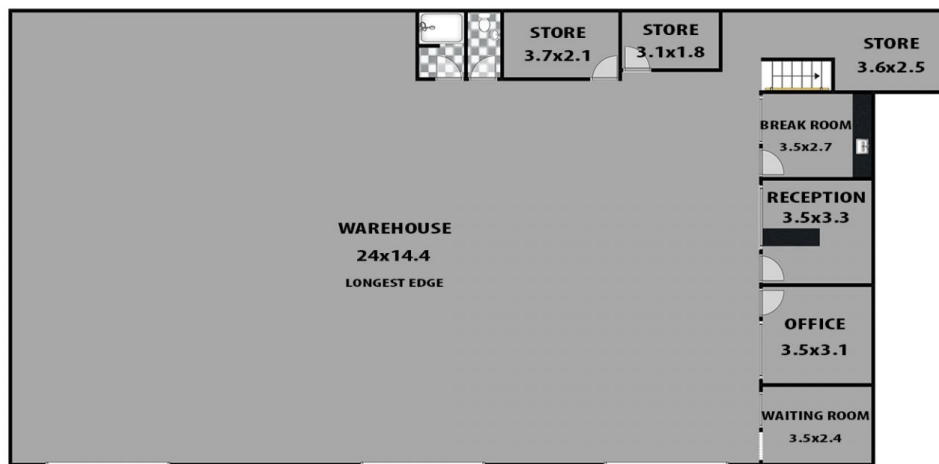
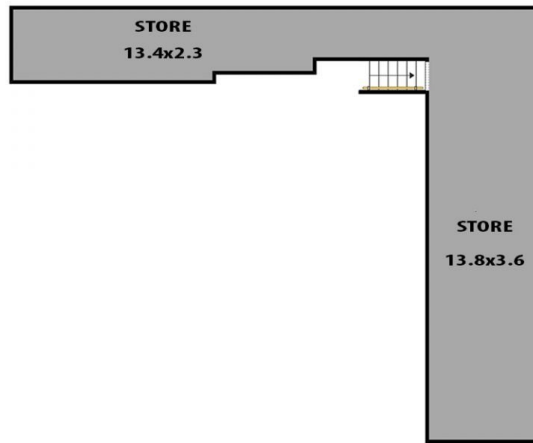
Invest or occupy in one of the most highly exposed locations in one of the most exciting growth centres in Western Sydney.

Situated on the Great Western Highway with a wide 79.6m frontage, the opportunity exists to benefit from the huge

**Price** : Auction On Site 29th May at 11am  
**Building Size** : 720 sqm  
**Land Size** : 1499 sqm  
**View** : <http://www.prdcommercialwest.com.au/sale/nsw/western-sydney/st-marys/commercial/industrial/7991221>



**Darren Latty**  
**02 4732 3711**



**LEGEND**



This 3D Artist Impression plan is for illustration purposes only and not a true replica.  
 All measurements are approximate and not guaranteed to be exact or to scale.  
 Furnishings, doors, windows, floor coverings, etc. are an artists impression only.